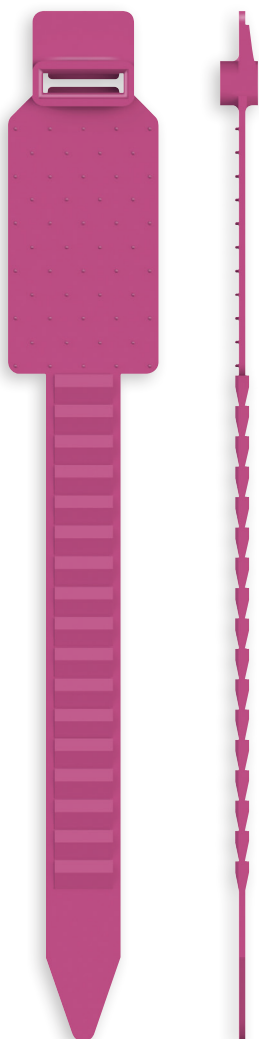


CATTLE IDENTIFICATION

VISUAL ONE PIECE RANGE



www.leaderproducts.com



TAIL TAG

TT

The Tail Tag is easy to apply by simply bending the durable plastic tag around the cow's tail and sliding the loop into place. The automatic kwiklock holds the Tail Tag in position and the animal is identified.

Please note: Ensure the tag is not ratcheted too tightly on the animal's tail. There should be enough space to insert a pencil between the tail and the tag.

The Tail Tags can be laser marked, with consecutive numbers or prefixes and numbers.

GREY	BROWN	PURPLE	GREEN	PINK	ORANGE	YELLOW	WHITE	BLACK	RED	BLUE
1	2	3	4	5	6	7	8	9	10	11

Marking Options: Laser

Dimensions: 25.27 (w) x 174.00 (l) mm

Weight: 4.10 grams

Note: Excludes Laser Marking

Image is smaller than actual size